

Mid-size Multimedia "Energy Smart" shredder

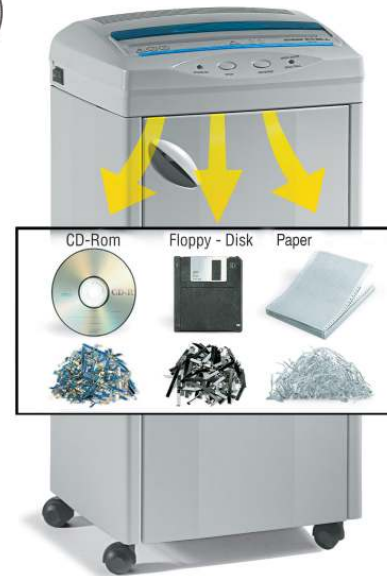
Manufacturer: ELCOMAN S.R.L.
Brand: KOBRA
Model: KOBRA 300 SS5 E/S
Article code: 99.652

KOBRA 300 SS5



Throat width:	300 mm
Security level DIN 66399:	P-2 O-2 T-2 E-2
Security level DIN 32757:	2
Shred size:	5,8mm straight cut
Paper capacity*:	42-46 A4/70gr; 37-39 A4/80gr sheets
Shreddable material:	Paper, Credit Cards, Credit Cards with chip, CD/DVD, Floppy
Speed:	0,09 m/sec
Noise level (idle/shredding):	59/60 dba
Voltage:	230 V
Power:	920 Watt (2 motors per 460W each)
Dimensions (WxDxH):	43x31x83cm
Net Weight:	33Kg

* Capacity varies on supply power, weight, quality and grain of paper, operating temperature and blade lubrication



Mid-size Multimedia straight cut shredder, suitable to shred computer paper with tractor-feed margins thanks to the wide 300mm throat. It's equipped with "**ENERGY SMART**" system with optical illuminated indicators for **power saving stand-by mode** and **environmental protection**. A **double motor** drive technology, operating in conjunction with **two "SUPER POTENTIAL POWER UNIT"**, delivers high shredding capacity. 85 liters high quality steel cabinet holds high volume of shredded materials.

- **24 hours continuous duty motor**
- Two heavy duty chain drive with steel gears "**SUPER POTENTIAL POWER UNIT**"
- Automatic Start/Stop through electronic eyes
- Automatic Stop with light signal for full bag and open door
- Cutting head takes staples and paper clips
- 85 liters high quality steel cabinet (capacity of 1.000 sheets in straight cut)
- Mounted on casters
- Motor thermal protection
- Accessories: computer form top shelf code 99.002, plastic waste bags (100 pcs.) code 99.207
- Certification marks: CB – CSA - CE
- Manufacturer: Elcoman – Via Gorizia n° 9, 20813 Bovisio Masciago - MB - Italy
- Packaging: 1 unit per box
- EAN Barcode 8 026064 996525



"ENERGY SMART"
Management system for **power saving stand-by mode**



Front door for easy emptying of
collecting bag



Computer forms top shelf to **save office space** (Space Saving Design)

Authorized dealer



Don Ruffles Limited
t.+44(0)845 5555 007



MADE IN ITALY