

# KOBRA DIGITAL-PRO

## DIGITAL MEDIA SHREDDER

### SMALL FOOTPRINT - HIGH PERFORMANCE

Manufacturer: ELCOMAN srl  
 Brand: KOBRA  
 Model: DIGITAL-PRO  
 Article Code: 99.955  
 EAN Code: 8 026064 999557



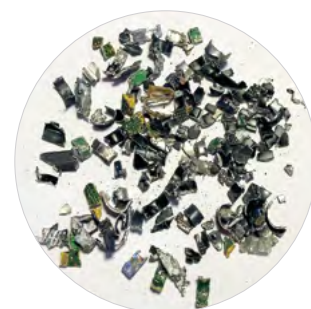
Throat width:	160 x 91 mm
Shred size:	4 x 15 mm
Security level ISO/IEC 21964 (DIN 66399):	E-3 T-4 O-3
Shreddable materials:	Solid State Drives (also with metal casings), Smartphones, SIM Cards, Flash Drives, USB Devices, IC Chips, Credit Cards with chips, PC Boards, SD cards, CD/DVD.
Throughput*:	SSD: 1.100/h - CD/DVD: 2.000/h
Waste bin capacity:	32 litres. Removable waste bin.
Noise level:	55 dB
Voltage:	230 Volt / 50-60 Hz
Power:	2000 Watt
Dimensions (WxDxH):	63 x 53 x 104 cm
Net weight:	141 Kg
* Theoretical throughput	Datasheet n.156 rev.5



## MAIN FEATURES

**KOBRA DIGITAL-PRO is a high-performance and versatile digital media shredder designed for the office environment.** It efficiently destroys Solid State Drives (also with metal casings), Smartphones, SIM Cards, Flash Drives, USB Devices, IC Chips, Credit Cards with chips, PC Boards and other digital storage media — combining high level of security, powerful shredding capability with enhanced functionality, convenient and ideal for the office environment.

- **High-level security shredding.**
- **Exclusive shredding technology** utilizing exclusively designed cutting knives manufactured from high grade carbon steel.
- **Small footprint:** designed for the office environment, foot print of 63x53 cm makes the Kobra Digital-Pro suitable for any office space.
- Attractive durable **metal cabinet** and heavy duty casters.
- **Shreds SSDs (also with metal casings), smartphones, SIM cards, USB drives, flash memory, IC chips, Credit Cards with chips, PC Boards, CD/DVD/BD.**
- **Powerful high efficiency motor** for reduced operating costs.  
**24-hour continuous duty.** Extremely **low noise level** below 55 dB.
- **Easy-access** with two convenient entry openings through sliding window and self-closing flap.
- **LED indicators:** clearly show the current status of the machine • **LED feed guidance system:** allows the operator to monitor and control the load on the cutting knives during continuous shredding operation.
- **Automatic anti-jamming system:** equipped with intelligent software that automatically handles jams, leaving the operator free of any manual intervention.
- **Automatic Start & Stop**
- **Safety Stop:** machine automatically stops when the door is opened or waste bin is full.



**Shreddable materials:** Shreds SSDs (also with metal casing), smartphones, SIM cards, USB drives, flash memory, IC chips, Credit Cards with chips, PC Boards, CD/DVD/BD.



**Touch-screen operating panel:** controls are activated by simply touching the intuitive control panel with LED indicators.



**"TITAN-COLOSSUS" GEARMOTOR DRIVE**  
shreds SSDs with metal casings

The Kobra DIGITAL-PRO is equipped with the **"Titan-Colossus" gearmotor drive specially designed heavy duty cutting knives with unmatched power** to shred large quantities of: SSDs (also with metal casings), smartphones, SIM cards, USB drives, flash memory, IC chips, Credit Cards with chips, PC Boards, CD/DVD/BD.



**LOG MANAGEMENT SYSTEM (OPTION):** allows to scan and automatically store into a computer barcode serial number of the device being shredded, keeping track of day and hour (barcode reader included).