

Hard Disk Drive Shredder JBF HD 38/50 (low version)

The JBF HD 38/50 is a unique solution for destruction of nearly all commonly used Hard Disk Drives. Installation of optional screens allows to **raise the security level from basic security** without screen (for industrial applications) **up to paramount security** with the optional 3 mm screen (for central intelligence). The solid and reliable industrial cutting unit with its powerful drive shreds actually used HDD's in a first step to 30 mm wide pieces. Assembling a screen underneath the cutting shafts allows to further reduce the final granule size to merely 20, 14, 12, 10, 8 or even only 6 mm diameter, dependant on the used mesh size. Fully automated control of all functions via a brand name PLC makes operation very simple and saves human resources. For most flexible use the HD 38/50 can be easily moved with two hand pallet trucks, requires only 1.7 sqm space and a three-phase supply Cekon CEE 32A for operation.

Via a slot in the cover of the feed hopper the **shredding material is fed continuously** into the hopper made of solid steel panels. Due to the perfect adjustment of knives and cutting speed the material will be destroyed independently. When lifting the top cover of the hopper, even larger media or several HDDs can be processed in parallel. For maximum safety a limit switch will cut-off the shredder as long as the top-cover is open.

The **solid cutting unit** is equipped with **30 mm wide cutters** and a **strong 4 kW geared motor** for industrial use. The shape of the cutting knives is **especially adapted for HDD-shredding** and ensures thereby best possible grabbing of the shredding material. The cutting unit was constructed for long-term industrial use. Rack, cutting unit and combs are especially designed for low maintenance. Using a forklift a screen can be lifted into the cutting block and be secured with 8 massive bolts. Then the pieces of the HDD's are permanently cut smaller and smaller until they are tiny enough to match through the holes of the screen and drop into the receptacle. Dependant on your security requirements **screens with 20, 14, 12, 10, 8 or merely 6 mm are available as an option (other screen sizes available upon request)**.

The **solid rack made of rectangle steel** tube allows to place a collecting box with trolley with 130 litre volume underneath (not included in the price) for collection of the shreds. A solid sheet steel door with limit switch protection provides for maximum safety. For **convenient transportation to other points of use** the machine can be moved with one or two hand pallet trucks.

All operation buttons and indicator lights plus emergency-switch and main on / off switch are combined in one central console. All electrical items like contactors, overload protection switches, emergency-stop-relay, main switch, transformers and terminals are clearly arranged in the central control cabinet. All **functions are controlled fully automatically** by a specially programmed Eaton easy PLC.

Optional 3 mm screen for JBF HD 38/50

With a forklift the 50 kg heavy screen can be lifted into the cutting block and be secured with 8 massive bolts. It will then hold the coarsely shredded pieces of the media within the cutting block. There they are permanently cut smaller and smaller until they are tiny enough to fit through the holes of the screen and drop into the receptacle. With **3 mm wide holes** this is the smallest available screen for **applications with paramount security requirements**. It provides for a practical throughput of **approx. 3 standard HDD's 3.5"** per hour, whereas the magnetic dust will require regular cleaning of the holes of the screen and this screen is more recommended for processing of flash memory like thumb drives or SSD drives. To reduce the wear the screen surface is made from extremely wear resistant HARDOX material. This screen produces media particles complying with **DIN 66399 security levels 05, T6, H6 and E5**.

Optional 6 mm screen for JBF HD 38/50

With a forklift the 50 kg heavy screen can be lifted into the cutting block and be secured with 8 massive bolts. It will then hold the coarsely shredded pieces of the HDD's within the cutting block. There they are permanently cut smaller and smaller until they are tiny enough to fit through the holes of the screen and drop into the receptacle. With **6 mm wide holes** this is the smallest available screen for **ultra secure applications**. It provides for a practical throughput of **approx. 20 standard HDD's 3.5"** per hour. To reduce the wear the screen surface is made from extremely wear resistant HARDOX material. This screen produces media particles complying with **DIN 66399 security levels 04, T5, H5 and E4**.

Optional 8 mm screen for JBF HD 38/50

With a forklift the 50 kg heavy screen can be lifted into the cutting block and be secured with 8 massive bolts. It will then hold the coarsely shredded pieces of the HDD's within the cutting block. There they are permanently cut smaller and smaller until they are tiny enough to fit through the holes of the screen and

drop into the receptacle. With **8 mm wide holes** this is the smallest available screen for **ultra secure applications**. It provides for a practical throughput of **approx. 22 standard HDD's 3.5"** per hour. To reduce the wear the screen surface is made from extremely wear resistant HARDOX material. This screen produces media particles complying with **DIN 66399 security levels 04, T4, H5 and E3**.

[Optional 10 mm screen for JBF HD 38/50](#)

With a forklift the 50 kg heavy screen can be lifted into the cutting block and be secured with 8 massive bolts. It will then hold the coarsely shredded pieces of the HDD's within the cutting block. There they are permanently cut smaller and smaller until they are tiny enough to fit through the holes of the screen and drop into the receptacle. With **10 mm wide holes** this is the smallest available screen for **high secure applications**. It provides for a practical throughput of **approx. 30 standard HDD's 3.5"** per hour. To reduce the wear the screen surface is made from extremely wear resistant HARDOX material. This screen produces media particles complying with **DIN 66399 security levels 04, T4, H5 and E3**.

[Optional 12 mm screen for JBF HD 38/50](#)

With a forklift the 50 kg heavy screen can be lifted into the cutting block and be secured with 8 massive bolts. It will then hold the coarsely shredded pieces of the HDD's within the cutting block. There they are permanently cut smaller and smaller until they are tiny enough to fit through the holes of the screen and drop into the receptacle. With **12 mm wide holes** this is the smallest available screen for **high secure applications**. It provides for a practical throughput of **approx. 50 standard HDD's 3.5"** per hour. To reduce the wear the screen surface is made from extremely wear resistant HARDOX material. This screen produces media particles complying with **DIN 66399 security levels 04, T4, H5 and E3**.

[Optional 14 mm screen for JBF HD 38/50](#)

With a forklift the 50 kg heavy screen can be lifted into the cutting block and be secured with 8 massive bolts. It will then hold the coarsely shredded pieces of the HDD's within the cutting block. There they are permanently cut smaller and smaller until they are tiny enough to fit through the holes of the screen and drop into the receptacle. With **14 mm wide holes** this is the smallest available screen for **high secure applications**. It provides for a practical throughput of **approx. 80 standard HDD's 3.5"** per hour. To reduce the wear the screen surface is made from extremely wear resistant HARDOX material. This screen produces media particles complying with **DIN 66399 security levels 03, T3, H5 and E2**.

[Optional 20 mm screen for JBF HD 38/50](#)

With a forklift the 50 kg heavy screen can be lifted into the cutting block and be secured with 8 massive bolts. It will then hold the coarsely shredded pieces of the HDD's within the cutting block. There they are permanently cut smaller and smaller until they are tiny enough to fit through the holes of the screen and drop into the receptacle. With **20 mm wide holes** this is the smallest available screen for **ultra secure applications**. It provides for a practical throughput of **approx. 100 standard HDD's 3.5"** per hour. To reduce the wear the screen surface is made from extremely wear resistant HARDOX material. This screen produces media particles complying with **DIN 66399 security levels 02, T2, H4 and E2**.

[Optional 130 l collecting box with trolley](#)

The chassis of the JBF HD 38/50 was designed to hold a trolley with a collecting box with approx. **130 l capacity**. The box is simply put onto the trolley and can be emptied manually by turning it upside down. The trolley is equipped with 4 guide rollers. With 130 litres collecting capacity the box can hold up to 100 HDD's 3,5" or 510 HDD's 2,5". Of course any other locally sourced boxes can be used, which fit into the chassis of the shredder.

[Mobile Lifting Table](#)

This mobile lifting table provides for **assembly and disassembly of the 50 kg screen without forklift or other lifting devices**. After removal of the collecting box or bin the lifting table is positioned manually under the cutting unit. Then the table is lifted by operating the foot pedal until it sits directly under the screen. Now the fixation bolts of the screen can be loosened and removed. Then the table - with the screen sitting

on it - can be lowered and pulled at the handle out of the machine. Installation of the screen can be done in reverse order. **Lockable guide rollers** provide for a safe stand when required.

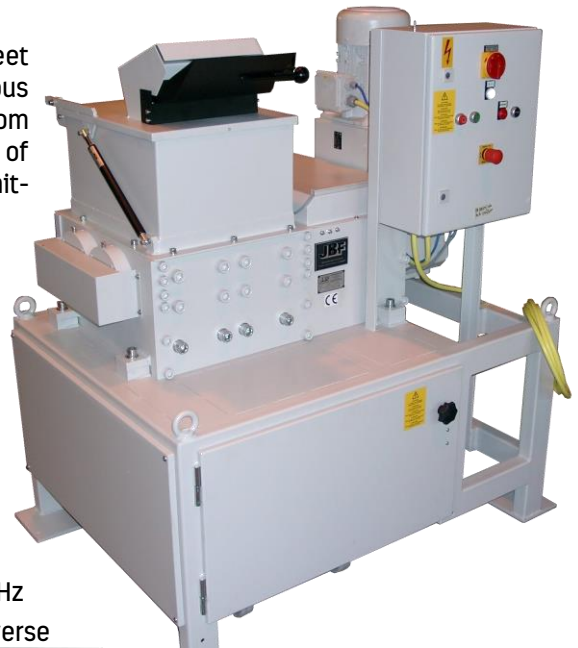


JBF HD 38/50 industrial shredder

Feeding hopper

Description:

Solid welded feed hopper made of sheet steel. With feed slot for continuous feeding of 3.5" HDD's. Foldable cover from sheet-steel with handle for feeding of large-format-media, secured with limit-switch, aided by a gas spring.



Cutting block 30 mm strip cut

Cutting zone:	app. 380 x 500 mm
Cutting cylinders:	2
Working width:	380 mm
Cutting width:	30 mm strip cut
Sound level:	about 70 dBA idling
Drive:	electric geared motor 4 kW – 400 V – 50 Hz
Overload protection:	electronic torque limitation with auto-reverse
Plug:	CEKON-plug CEE 32 A
Fusing:	25 A slow blow, by customer
Function control:	EATON Easy 512 PLC
Throughput:	approx. 20 HDD's 3.5" per hour with the optional 6 mm screen. Other screens are available alternatively as well.

Description:

Cutting cylinders out of single exchangeable knives and cams, knives are completely hardened to special specification and thus can be re-sharpened. The cutters are designed for the purpose of cutting HDD's. Also CD's, DVD's, video-cassettes, dlt-tapes and other magnet tapes, electronic circuit boards and the like can be processed. Automatic monitoring of the shredder via central controlling unit.



Complete rack

Description:

Stable welded profile steel construction. Solid sheet steel covers. Integrated door for access to receptacle for shreds, equipped with safety switch (as soon as the door is opened, the shredder is stopped). Painted RAL7035 light-grey.

Control elements

Main Switch	Connects the machine with the power supply
Emergency Stop Switch	Immediate disconnection of the machine in case of emergency
Pushbutton "Start"	pushing the tracer starts the machine via PLC
Pushbutton "Stop"	pushing the tracer stops the machine via PLC
Reverse Tracer	pushing the tracer reverses the cutting cylinders
Warning Lights	control voltage available / machine is in operation
Safety Switch	opening the access door to receptacle + lifting the cover of the feed hopper causes emergency stop



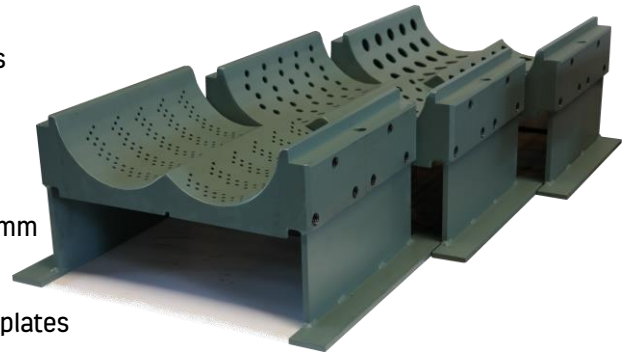


Optional Screens

Easy exchange (with forklifter)
Adaptation of the machine to various security requirements
Rugged and proven solution

Technical Data

Available mesh sizes	3 / 6 / 8 / 10 / 12 / 14 / 20 mm
Weight	50 kg
Material	Steel with HARDOX screen plates



Optional Trolley with Collecting Box

Collecting Box 130 Litre

External dimensions	(L x W x H) 80 x 60 x 32 cm
Internal dimensions	(L x W x H) 77 x 57 x 30.5 cm
Usable height	29.3 cm
Collecting Volume:	130 l
Weight:	4.9 kg
Material:	PP
Colour:	Silver-grey, similar RAL 7001



Trolley

External dimensions	(L x W) 82 x 62 cm
Load capacity	250 kg
Castors	4 guided castors with rubber, Ø 125 mm
Weight:	8.9 kg
Material:	PP
Colour:	Silver-grey, similar RAL 7001





Mobile Lifting Table

Easy exchange of screens

Convenient manoeuvring via handle in 950 mm height

Dual-sheer hydraulic lift

Technical Data

Load capacity	350 kg
Weight	105 kg
Table height min / max	350 / 1,320 mm
Table size L x W	900 x 500 mm
Travel per stroke	30 mm
Lowering speed	controllable
Brake	at both guided castors
Castors	PU, 127 x 40 mm

