



Shredding
Machines
.co.uk



Large Document Shredder 14.95 S

Large document shredder with a sophisticated feeding method for smooth and crumpled paper

Large Document Shredder 14.95 S



High-power, thermally protected geared electric motor (4.0 kW motor power) and stable drive

Rugged, wear-resistant cutting rollers made from high-grade steel for optimum cutting performance

440 mm working width; suitable for all standard computer formats



Designed to ease operation

- Feeding via conveyor belt
- Dosage paddles pull not only smooth, but also crumpled paper in the same way
- Suits all standard continuous paper formats with its working width of 440 mm
- ON / OFF control via a rotary selector switch
- Separate main power switch
- Alarm „bin full“, with simultaneous automatic stop of the shredding process

Standard safety system

- Lockable master switch
- Safety switch to stop machine if access door to the receptacle is openend
- Motor protection device with thermo-sensor

Optional accessories

- The feed table can be expanded on both sides for convenient and rapid loading of huge material quantities.
- Screw-on style Emergency-Stop-Bar for the feed table. This Martin Yale invention provides for maximum operating safety beyond all applicable safety prescriptions.



Useful add-on: Dust Extractor

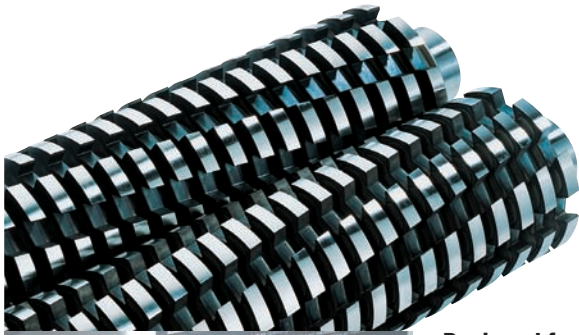


High flexibility

- Movable on two fixed and two lockable guide rollers
- The 800 mm width gives easy access through all standard doors
- A bracket under the table holds the feed cable safely and comfortably during carrying

Swivel-out receptacle

- Supplied as standard equipment
- Capacity 200 litres
- The receptacle can be swivelled out to the right side. Upon request swivelling out to the left side can be made available as an option.
- Environment-friendly disposal in PE-bags
- Convenient removal of the filled PE-bag by using a pallet.



Large Document Shredder 14.95 S



Designed for ease of operation

- Clearly laid out, rugged rotary selector switch for ON / OFF and reverse function
- Lockable master switch to prevent unauthorised use
- Visual status displays



Trouble-free operation

- All system functions are programmable logic controller (PLC) controlled
- Automatic reverse and restart in case of overload



Unique input method

- Generously sized feed table for controlled, manageable, safe and rapid loading
- Integrated conveyor belt moves the paper to the cutters
- Dosage paddles in front of the shredding mechanism take smooth as well as crumpled paper
- Cutting mechanism with easy access for maintenance



Convenient and fully-automatical workflow



Ensures a maximum of operation safety



Ensure highest user friendliness



Optimized interaction of the several drive parts



Comprehensive safety features

- Extensive safety systems provided for all functions to protect the operator and the machinery



Shipping

- Packed in wooden crate
- Dimensions L x W x H
1,630 x 1,050 x 1,730 mm
- Transport weight 510 kg

Large Document Shredder 14.95 S

Security class	DIN 32757-1	3	3	2	1
Size of shreds	mm	3.8 x 40	6 x 50	5.8	11.8
Shredding capacity ¹	sheets	120-130	120-130	120-140	200-210
Shredding capacity ²	kg/h	235	280	220	240
Cutting speed	approx. m/sec.	0.30	0.30	0.28	0.28
Working width	approx. mm	440	440	440	440
Collecting sack volume	l	200			
Filled weight ³	kg	20-38			
Sound level	dBA	68			
Power supply	Volt	400 / 3ph			
Motor power	kW	4			
Dimensions L x W x H	mm	1,670 x 800 x 1,630			
Weight	kg	443			

¹ based on 70 g/m² A4 paper. Sheet capacities vary depending on quality, weight, grain of paper and sufficient power supply. It may be lower if the voltage is below the rated/nominal value.

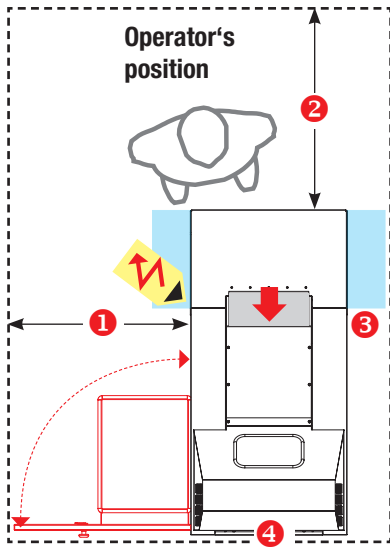
² depending on feeding, material and power supply, with cutters in mint condition

³ depending on material and cutting width

Installation Instructions

intimus 14.95 S / Large Document Shredder

Scale 1:40



Dimensions	mm
① Length	1,670
② Height	1,630
③ Inlet height or desk height	1.200
④ Width	800
with expanded feed table	1.200

Required space / distances	mm
with door on the left side	
① min. 100	③ min. 950
with door on the right side	
① min. 950	③ min. 100
② min. 1,000	④ min. -



Position of controls



Power Supply 3 Phase

- Power lead = 4.55 m
- 400-415 V / 50 Hz supplied with Cekon CEE 32 A plug, 5-pin
- ...other voltages on request

Required Fusing by customer

- Miniature Circuit Breaker with tripping characteristic C
- or Fuse type gL / gG, coordination type 1 according to IEC / EN 60947-4-1

400-415 V / 50 Hz = 25 A slow blow
 220-230 V / 50-60 Hz = 32 A slow blow
 200 V / 50-60 Hz = 35 A slow blow

